



CBit 8





- An extremely slim and compact touch panel console ultrasound system , providing a tool for process optimization, simplifying clinical screening.
- Featured with comprehensive functions, the system implements elaboration, modernization and specialization in the integral whole.

10.1 inch HD touch panel

Superbly responsive
Customizable interface
Ergonomic tilting ensures all-dimensional,
multi-angle visualization



19 inch HD LED monitor
Rotatable: $\pm 90^\circ$



Innovative energy-saving light



Smart Standby Mode

- Smart backstage management enables extended battery life
- Instant power-on

Internal Battery

Adaptive Control Panel
Rotatable ($\pm 45^\circ$)
Liftable (0-15cm)

Dedicated video printer space



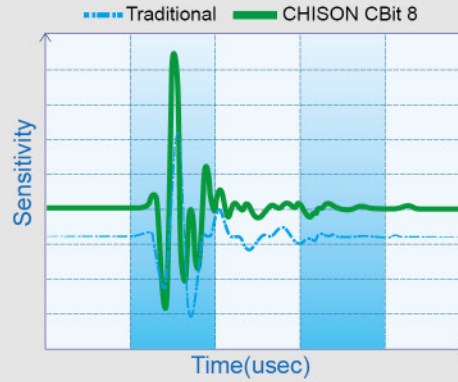
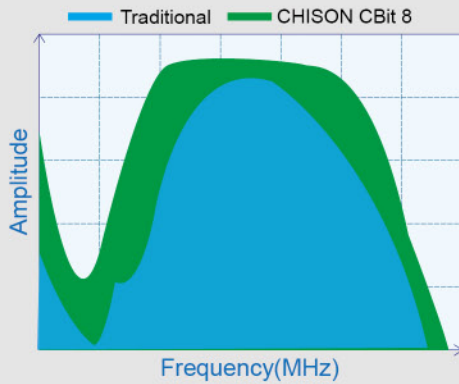
Hero Kit
Innovative service solution
Quick · Easy · Reliable · Affordable



Comprehensive Features and Applications

Single Crystal Technologies

- CHISON CBit8 uses the latest advance in transducer technology, which has wider bandwidth, higher sensitivity and better signal-noise ratio, providing superb anatomic details to users, delivering excellent resolution and penetration, especially during difficult-patient scanning.



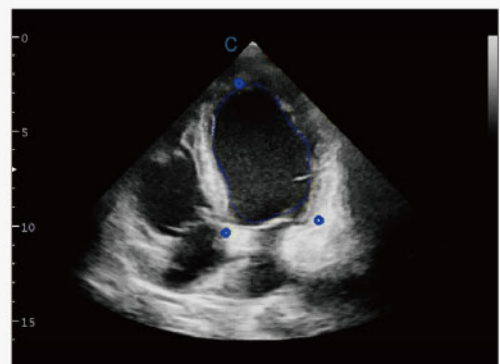
Wide Angle Transvaginal Probe

- Up to 210° extremely wide angle.
- Provide more diagnostic information.
- Save time, improve the efficiency.



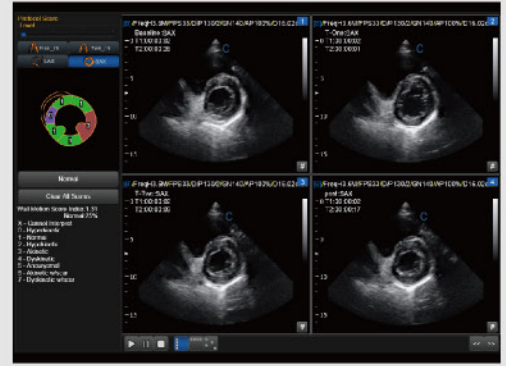
LV Tracking

- A new non-invasive method for the assessment of left ventricular (LV) global and regional function.



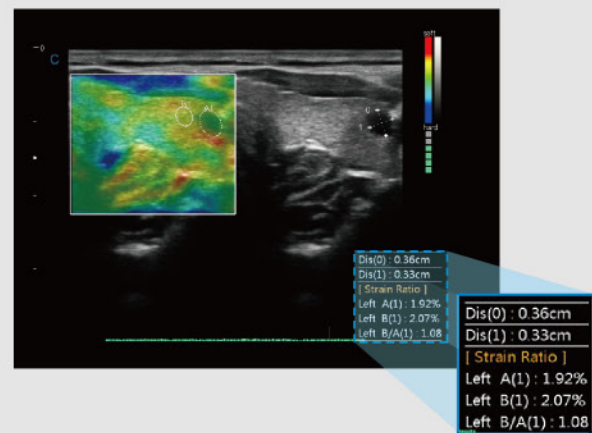
Stress Echo

- Help to confirm or rule out the presence of coronary artery disease.
- Patients with coronary artery blockages may have minimal or no symptoms during rest.
- Symptoms and signs of heart disease may be unmasked by exposing the heart to the stress of exercise.



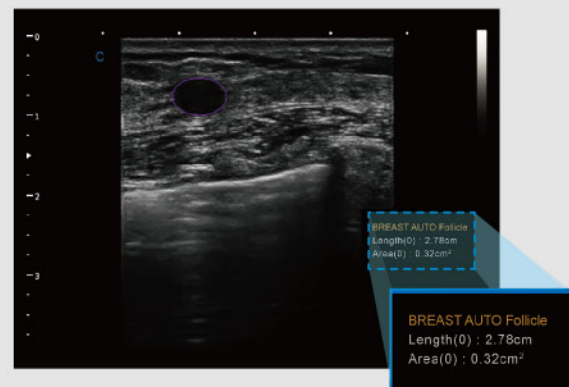
Quantitative Elastography

- Display the elasticity of different tissues in different color.
- Provide more clinical information, especially for soft tissue.
- Strain ratio measurement quantitatively gives the ratio between the average strain of the selected region and of the nearby normal tissue region.



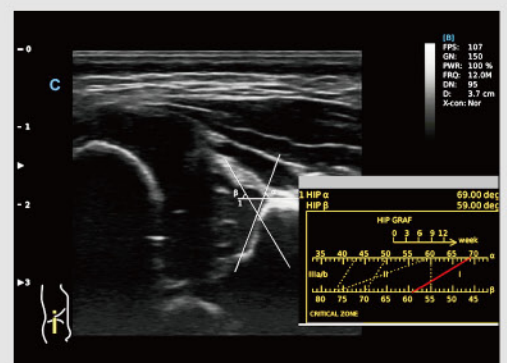
Auto Breast Detection

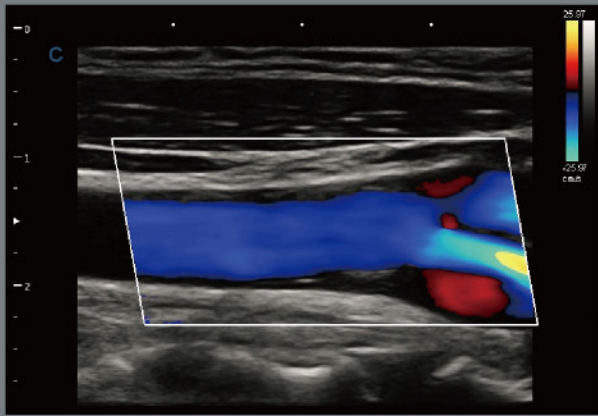
- Automatically detect breast lesion.
- Provide the size.
- Efficient for the diagnosis.



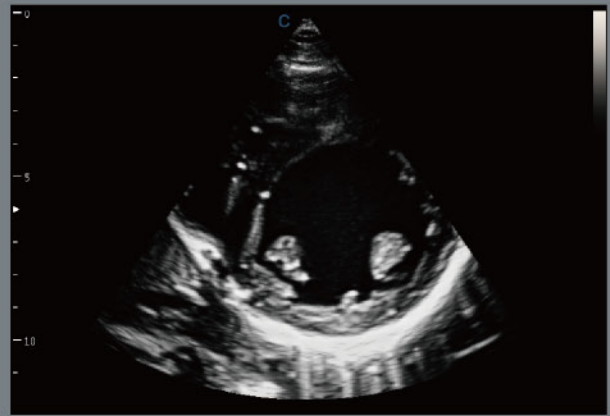
Smart HIP

- Use a graph for hip orthotics diagnosis, help the doctor with easier and more accurate diagnosis during the pediatric hip scanning.
- Different angle indicates different level of hip deformity, which is easier and more obvious to see with the aid of the graph. (I, II, D, IIIa, IIIb).





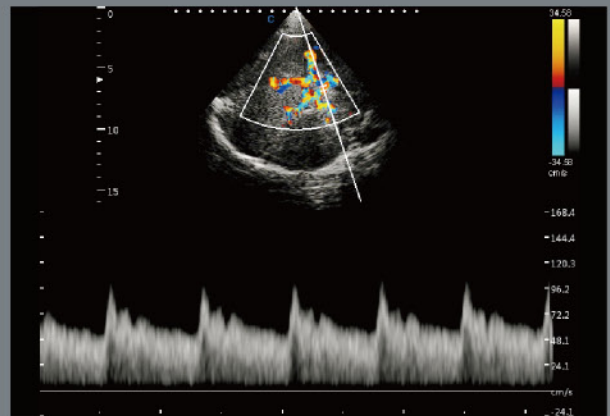
Carotid Plaque, C Mode



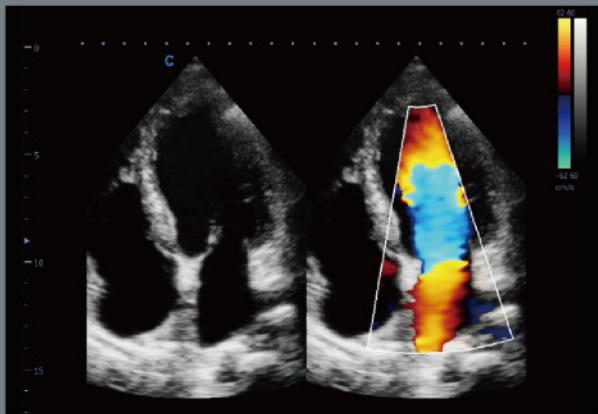
Papillary Short Axis View, B Mode



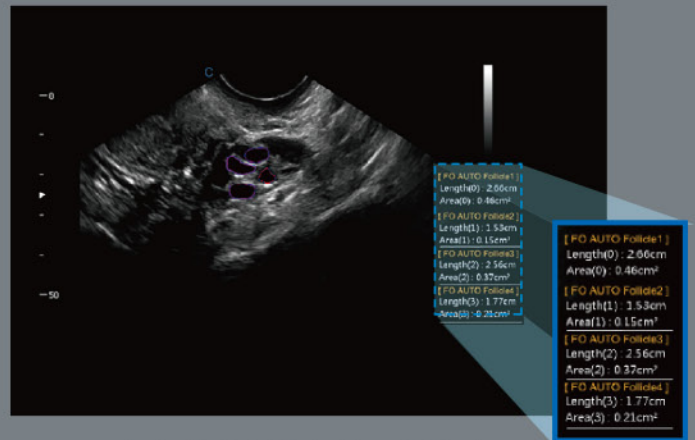
Fetal Face, Virtual HD



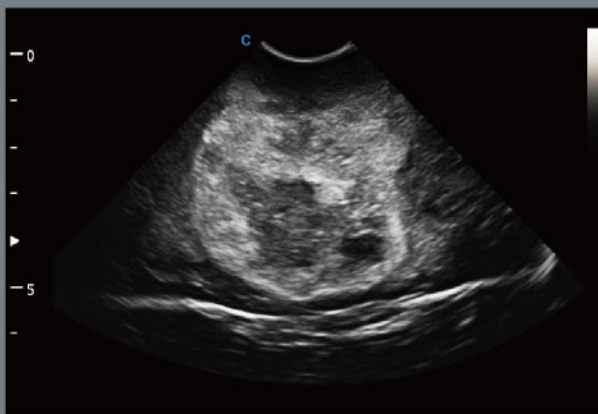
Transcranial, PW Mode



Four Chambers View, B/BC Mode



Auto Follicle Detection, B Mode



Pediatric Cerebral Tumor, B Mode



Hydronephrosis, B Mode



2.0MHz-6.8MHz Convex
D3C60L



2.0MHz-8.0MHz Phased array
D5P64L



2.0MHz-6.8MHz Volume
V4C40L



2.0MHz Pencil
D2D16L



4.0MHz-15.0MHz Linear
D7L40L



4.0MHz-6.0MHz Tee(Adult)
T5P64L



7.0MHz-18.0MHz(With FHI) Linear
D12L40L



4.0MHz-6.0MHz Tee(Pediatric)
MT5P48L



5.0MHz-16.0MHz Linear
D8L50L



4.0MHz-12.0MHz Transvaginal
D6C12L



4.0MHz-15.0MHz Linear
M8L40L



4.0MHz-15.0MHz Transvaginal
D7C10L



4.0MHz-10.7MHz Linear
D10L30L



4.0MHz-15.0MHz Trans-Rectal
D7L40L-REC



1.5MHz-5.3MHz Phased array
D3P64L



2.0MHz-6.8MHz Micro-Convex
D3C20L

CHISON Medical Technologies Co., Ltd.

Sales & Service Contact Address

No.9, Xinhuihuan Road, Xinwu District, Wuxi, Jiangsu, China 214028

TEL: 0086-510-85310593 / 85310937

FAX: 0086-510-85310726

EMAIL: export@chison.com.cn